

LINKSYS™

Wireless Regulatory Information

E1700 Wi-Fi Router

Table of Contents

Wireless Regulatory Information	1
FCC Statement	1
Mexico Regulatory Statement	1
FCC Radiation Exposure Statement	1
Safety Notices.	1
Industry Canada Statement	2
Avis d'Industrie Canada.	2
Wireless Disclaimer	3
Avis de non-responsabilité concernant les appareils sans fil	3
Declaration of Conformity with Regard to EU Directive 1999/5/EC (R&TTE Directive).	3
Wireless Equipment (Wireless-AC/N/G/A/B Products)	4
National Restrictions	4
Product Usage Restrictions	5
Technical Documents on www.Linksys.com	5
WEEE Information	7
User Information for Consumer Products Covered by EU Directive 2002/96/EC on Waste Electric and Electronic Equipment (WEEE)	7

Wireless Regulatory Information

FCC Statement

This device complies with Part 15 of the FCC Rules. Operation is subject to the following two conditions: (1) This device may not cause harmful interference, and (2) this device must accept any interference received, including interference that may cause undesired operation.

This product has been tested and complies with the specifications for a Class B digital device, pursuant to Part 15 of the FCC Rules. These limits are designed to provide reasonable protection against harmful interference in a residential installation. This equipment generates, uses, and can radiate radio frequency energy and, if not installed and used according to the instructions, may cause harmful interference to radio communications. However, there is no guarantee that interference will not occur in a particular installation. If this equipment does cause harmful interference to radio or television reception, which is found by turning the equipment off and on, the user is encouraged to try to correct the interference by one or more of the following measures:

- Reorient or relocate the receiving antenna
- Increase the separation between the equipment or devices
- Connect the equipment to an outlet other than the receiver's
- Consult a dealer or an experienced radio/TV technician for assistance

FCC Caution: Any changes or modifications not expressly approved by the party responsible for compliance could void the user's authority to operate this equipment.

IEEE 802.11b or 802.11g operation of this product in the USA is firmware-limited to channels 1 through 11.

Mexico Regulatory Statement

La operación de este equipo está sujeta a las siguientes dos condiciones: (1) es posible que este equipo o dispositivo no cause interferencia perjudicial y (2) este equipo o dispositivo debe aceptar cualquier interferencia, incluyendo la que pueda causar su operación no deseada.

ADICIONALMENTE SI EL EQUIPO DISPONE DE UN CONECTOR EXTERNO Y/O ANTENAS EXTERNAS, Y/O AMPLIFICADORES EXTERNOS ADICIONALES SE DEBERÁ AGREGAR LA SIGUIENTES DECLARACIONES SEGÚN CORRESPONDA:

- este equipo ha sido diseñado para operar con las antenas que enseguida se enlistan y para una ganancia máxima de antena de 3.5 dB. El uso con este tipo de antenas no incluidas en esta lista o que tengan una ganancia mayor que 3.5 dB quedan prohibidas. La impedancia requerida de la antena es de 50 ohms.
- el fabricante del equipo proporcionará los valores apropiados de 3.5 e 50 para cumplir con lo especificado en 4.1.4. y con las disposiciones legales y técnicas de operación que corresponda.
- el fabricante del equipo proporcionará una lista de los amplificadores que resulten aceptables para usarse con el equipo de radiocomunicación de espectro disperso.

EAC Mark of Conformity for Russia, Kazakhstan and Belarus



FCC Radiation Exposure Statement

This equipment complies with FCC radiation exposure limits set forth for an uncontrolled environment. This equipment should be installed and operated with minimum distance 20 cm between the radiator and your body.

This transmitter must not be co-located or operating in conjunction with any other antenna or transmitter.

Safety Notices



WARNING: Do not use this product near water, for example, in a wet basement or near a swimming pool.



WARNING: Avoid using this product during an electrical storm. There may be a remote risk of electric shock from lightning.



WARNING: This product may contain chemicals, known to the State of California to cause cancer, and birth defects or other reproductive harm. Wash hands after handling.



WARNING: The power adaptor is the equipment's disconnection device. The power outlet must be located nearby the equipment and its access must be easy.

Safety guidelines



WARNING: Use the following safety guidelines to ensure your own personal safety and to help protect your product from potential damage. To reduce the risk of bodily injury, electrical shock, fire, and damage to the equipment, observe the following precautions.

Do not service this product except as explained in your system documentation.

If any of the following conditions occur, unplug the product from the electrical outlet and replace the part or contact your service provider/retailer:

The power cable or plug is damaged.

An object has fallen into the product.

The product has been exposed to water.

The product has been dropped or damaged.

The product does not operate correctly when you follow the operating instructions.

Keep your system away from radiators and heat sources.

Install product in a manner and location to assure ventilation openings are not blocked.

Do not spill food or liquids on your system components, and never operate the product in a wet environment. If the system gets wet, contact your service provider/retailer.

Do not push any objects into the openings of your system. Doing so can cause fire or electric shock by shorting out interior components.

Operate the product only from the type of external power source indicated on the electrical ratings label.

Be sure that attached devices are electrically rated to operate with the power available in your location.

Position system cables and power cables carefully; route cables so that they cannot be stepped on or tripped over. Be sure that nothing rests on any cables.

Do not modify power cables or plugs.

Always follow your local and national wiring rules.

Industry Canada Statement

CAN ICES-3 (B)/NMB-3 (B).

Operation is subject to the following two conditions:

1. This device may not cause interference and

2. This device must accept any interference, including interference that may cause undesired operation of the device.

To reduce potential radio interference to other users, the antenna type and its gain should be so chosen that the EIRP is not more than required for successful communication.

Industry Canada Radiation Exposure Statement

This equipment complies with IC radiation exposure limits set forth for an uncontrolled environment. This equipment should be installed and operated with minimum distance 20 cm between the radiator & your body.

This transmitter must not be co-located or operating in conjunction with any other antenna or transmitter.

This device has been designed to operate with an antenna having a maximum gain of 3.5 dBi at 2.4 GHz. Antenna having a higher gain is strictly prohibited per regulations of Industry Canada. The required antenna impedance is 50 ohms.

No.†	Antenna type	2.4 GHz Max. gain (dBi)	Antenna Connector
1	Dipole	≤3.5	R-SMA
2	Dipole	≤3.5	R-SMA

Avis d'Industrie Canada

CAN ICES-3 (B)/NMB-3 (B).

L'utilisation de ce dispositif est autorisée seulement aux conditions suivantes :

1. il ne doit pas produire de brouillage et
2. il doit accepter tout brouillage radioélectrique reçu, même si ce brouillage est susceptible de compromettre le fonctionnement du dispositif.

Afin de réduire le risque d'interférence aux autres utilisateurs, le type d'antenne et son gain doivent être choisis de façon à ce que la puissance isotrope rayonnée équivalente (p.i.r.e.) ne soit pas supérieure au niveau requis pour obtenir une communication satisfaisante.

Avis d'Industrie Canada concernant l'exposition aux radiofréquences

Ce matériel est conforme aux limites établies par IC en matière d'exposition aux radiofréquences dans un environnement non contrôlé. Ce matériel doit être installé et utilisé à une distance d'au moins 20 cm entre l'antenne et le corps de l'utilisateur.

L'émetteur ne doit pas être placé près d'une autre antenne ou d'un autre émetteur, ou fonctionner avec une autre antenne ou un autre émetteur.

Cet appareil est conçu pour fonctionner avec une antenne ayant un gain maximal de 3,5 dBi à 2,4 GHz. Les antennes ayant un gain plus élevé sont strictement interdites par Industrie Canada. L'impédance d'antenne requise est de 50 ohms.

N°†	Type d'antenne	Gain de 2,4 GHz (dBi)	Connecteur d'antenne
1	Dipôle	≤3,5	Coaxial subminiature version A à polarité inversée
2	Dipôle	≤3,5	Coaxial subminiature version A à polarité inversée

Wireless Disclaimer

The maximum performance for wireless is derived from IEEE Standard 802.11 specifications. Actual performance can vary, including lower wireless network capacity, data throughput rate, range and coverage. Performance depends on many factors, conditions and variables, including distance from the access point, volume of network traffic, building materials and construction, operating system used, mix of wireless products used, interference and other adverse conditions.

Avis de non-responsabilité concernant les appareils sans fil

Les performances maximales pour les réseaux sans fil sont tirées des spécifications de la norme IEEE 802.11. Les performances réelles peuvent varier, notamment en fonction de la capacité du réseau sans fil, du débit de la transmission de données, de la portée et de la couverture. Les performances dépendent de facteurs, conditions et variables multiples, en particulier de la distance par rapport au point d'accès, du volume du trafic réseau, des matériaux utilisés dans le bâtiment et du type de construction, du système d'exploitation et de la combinaison de produits sans fil utilisés, des interférences et de toute autre condition défavorable.

Declaration of Conformity with Regard to EU Directive 1999/5/EC (R&TTE Directive)

Compliance Information for Linksys Consumer Products (2,4 GHz) Relevant to the European Union and Other Countries Following the EU Directive 1999/5/EC (R&TTE Directive)

Български [Bulgarian]	Това оборудване отговаря на съществените изисквания и приложениями клаузи на Директива 1999/5/EC.
Česky [Czech]:	Toto zařízení je v souladu se základními požadavky a ostatními odpovídajícími ustanoveními Směrnice 1999/5/EC.
Dansk [Danish]:	Denne udstyr er i overensstemmelse med de væsentlige krav og andre relevante bestemmelser i Direktiv 1999/5/EF.
Deutsch [German]:	Dieses Gerät entspricht den grundlegenden Anforderungen und den weiteren entsprechenden Vorgaben der Richtlinie 1999/5/EU.
Eesti [Estonian]:	See seade vastab direktiivi 1999/5/EÜ olulistele nõuetele ja teistele asjakohastele sätetele.

English:	This equipment is in compliance with the essential requirements and other relevant provisions of Directive 1999/5/EC.
Español [Spanish]:	Este equipo cumple con los requisitos esenciales así como con otras disposiciones de la Directiva 1999/5/CE.
Ελληνική [Greek]:	Αυτός ο εξοπλισμός είναι σε συμμόρφωση με τις ουσιαστικές απαιτήσεις και άλλες σχετικές διατάξεις της Οδηγίας 1999/5/EC.
Français [French]:	Cet appareil est conforme aux exigences essentielles et aux autres dispositions pertinentes de la Directive 1999/5/EC.
Íslenska [Icelandic]:	Þetta tæki er samkvæmt grunnkröfum og öðrum viðeigandi ákvæðum Tilskipunar 1999/5/EC.
Italiano [Italian]:	Questo apparato è conforme ai requisiti essenziali e agli altri principi sanciti dalla Direttiva 1999/5/CE.
Latviski [Latvian]:	Šī iekārta atbilst Direktīvas 1999/5/EK būtiskajām prasībām un citiem ar to saistītajiem noteikumiem.
Lietuvių [Lithuanian]:	Šis įrenginys tenkina 1999/5/EB Direktyvos esminius reikalavimus ir kitas šios direktyvos nuostatas.
Nederlands [Dutch]:	Dit apparaat voldoet aan de essentiële eisen en andere van toepassing zijnde bepalingen van de Richtlijn 1999/5/EC.
Malti [Maltese]:	Dan l-apparat huwa konformi mal-ħtiġiet essenzjali u l-provedimenti l-oħra rilevanti tad-Direttiva 1999/5/EC.
Magyar [Hungarian]:	Ez a készülék teljesíti az alapvető követelményeket és más 1999/5/EK irányelvben meghatározott vonatkozó rendelkezéseket.
Norsk [Norwegian]:	Dette utstyret er i samsvar med de grunnleggende krav og andre relevante bestemmelser i EU-direktiv 1999/5/EF.
Polski [Polish]:	Urządzenie jest zgodne z ogólnymi wymaganiami oraz szczególnymi warunkami określonymi Dyrektywą UE: 1999/5/EC.
Português [Portuguese]:	Este equipamento está em conformidade com os requisitos essenciais e outras provisões relevantes da Directiva 1999/5/CE.
Română [Romanian]:	Acest echipament este în conformitate cu cerințele esențiale și cu alte prevederi relevante ale Directivei 1999/5/EC.

Slovensko [Slovenian]:	Ta naprava je skladna z bistvenimi zahtevami in ostalimi relevantnimi pogoji Direktive 1999/5/EC.
Slovensky [Slovak]:	Toto zariadenie je v zhode so základnými požiadavkami a inými príslušnými nariadeniami direktív: 1999/5/EC.
Suomi [Finnish]:	Tämä laite täyttää direktiivin 1999/5/EY olennaiset vaatimukset ja on siinä asetettujen muiden laitetta koskevien määräysten mukainen.
Svenska [Swedish]:	Denna utrustning är i överensstämmelse med de väsentliga kraven och andra relevanta bestämmelser i Direktiv 1999/5/EC.

For all products, the Declaration of Conformity (DoC) is available through one or more of these options:

- A pdf file is included on the product's CD.
- A print copy is included with the product.
- A pdf file is available on the product's webpage. Visit <http://support.linksys.com/eudoc> and select your country or region. Then select your product.
- If you need any other technical documentation, see the "Technical Documents on <http://support.linksys.com>" section, as shown later in this document.

Wireless Equipment (Wireless-AC/N/G/A/B Products)

The following standards were applied during the assessment of the product against the requirements of the Directive 1999/5/EC:

- Radio: EN 300 328 and/or EN 301 893 as applicable
- EMC: EN 301 489-1, EN 301 489-17
- Safety: EN 60950-1 and either EN 50385 or EN 50371

For the Linksys non-wireless products and the 2.4 GHz wireless products the following CE mark is added to the equipment:



National Restrictions

This product may be used in all EU countries (and other countries following the EU directive 1999/5/EC) without any limitation except for the countries mentioned below:

Ce produit peut être utilisé dans tous les pays de l'UE (et dans tous les pays ayant transposés la directive 1999/5/CE) sans aucune limitation, excepté pour les pays mentionnés ci-dessous:

Questo prodotto è utilizzabile in tutti i paesi EU (e in tutti gli altri paesi che seguono le direttive EU 1999/5/EC) senza nessuna limitazione, eccetto per i paesi menzionati di seguito:

Das Produkt kann in allen EU Staaten ohne Einschränkungen eingesetzt werden (sowie in anderen Staaten die der EU Direktive 1999/5/CE folgen) mit Ausnahme der folgenden aufgeführten Staaten:

In the EU and other European countries, the 2,4GHz bands have been made available for the use of wireless local area networks (LANs). The *Overview of Regulatory Requirements for Wireless LANs* table provides an overview of the regulatory requirements applicable for the 2,4GHz bands.

Later in this document you will find an overview of countries in which additional restrictions or requirements or both are applicable.

The requirements for any country may evolve. Linksys recommends that you check with the local authorities for the latest status of their national regulations for the 2,4GHz wireless LANs.

Overview of Regulatory Requirements for Wireless LANs

Frequency Band (MHz)*	Max Power Level (EIRP) (mW)	Indoor ONLY	Indoor & Outdoor
2400-2483,5	100		X

The following countries have restrictions and/or requirements in addition to those given in the *Overview of Regulatory Requirements for Wireless LANs* table:

France

For 2,4 GHz, the product should not be used outdoors in the band 2454 - 2483,5 MHz. There are no restrictions when used in other parts of the 2,4 GHz band OR when used indoors. Check <http://www.arcep.fr/> for more details.

Pour la bande 2,4 GHz, l'équipement ne doit pas être utilisé en extérieur dans la bande 2454 - 2483,5 MHz. Il n'y a aucune restriction pour son utilisation dans d'autres parties de la bande des 2,4 GHz ainsi que pour une utilisation en intérieur. Consultez <http://www.arcep.fr/> pour de plus amples détails.

Italy

This product meets the National Radio Interface and the requirements specified in the National Frequency Allocation Table for Italy. Unless this 2,4-GHz wireless LAN product is operating within the boundaries of the owner's property, its use requires a "general authorization". Please check <http://www.comunicazioni.it/> for more details.

Questo prodotto è conforme alle specifiche di Interfaccia Radio Nazionali e rispetta il Piano Nazionale di ripartizione delle frequenze in Italia. Se non viene installato all'interno del proprio fondo, l'utilizzo di prodotti Wireless LAN a 2,4 GHz richiede una "Autorizzazione Generale". Consultare <http://www.comunicazioni.it/> per maggiori dettagli.

Latvia

The outdoor usage of the 2,4 GHz band requires an authorization from the Electronic Communications Office. Please check <http://www.esd.lv> for more details.

2,4 GHz frekveču joslas izmantošanai ārpus telpām nepieciešama atļauja no Elektronisko sakaru direkcijas. Vairāk informācijas: <http://www.esd.lv>.

Notes:

1. Although Norway, Switzerland and Liechtenstein are not EU member states, the EU Directive 1999/5/EC has also been implemented in those countries.
2. The regulatory limits for maximum output power are specified in EIRP. The EIRP level of a device can be calculated by adding the gain of the antenna used (specified in dBi) to the output power available at the connector (specified in dBm).

Product Usage Restrictions

This product is designed for indoor usage only. Outdoor usage is not recommended, unless otherwise noted.

2,4 GHz Restrictions

This product is designed for use with the standard, integral or dedicated (external) antenna(s) that is/are shipped together with the equipment.

However, some applications may require the antenna(s), if removable, to be separated from the product and installed remotely from the device by using extension cables.

Combinations of extension cables and antennas resulting in a radiated power level exceeding 100 mW EIRP are illegal.

Third-Party Software or Firmware

The use of software or firmware not supported/provided by Linksys products may result that the equipment is no longer compliant with the regulatory requirements.

Technical Documents on www.linksys.com

Follow these steps to access technical documents:

1. Enter www.linksys.com in your web browser.
2. Select the country or region in which you live.
3. Click the **Support** tab.
4. Type the model number or keyword.
5. Select **Downloads** from the list of tabs.

6. Select the version of product.
7. Click on the document you want and it will open in PDF format if you have Adobe Reader installed on your computer.


WEEE Information

User Information for Consumer Products Covered by EU Directive 2002/96/EC on Waste Electric and Electronic Equipment (WEEE)


This document contains important information for users with regards to the proper disposal and recycling of Linksys home networking products. Consumers are required to comply with this notice for all electronic products bearing the following symbol:




English - Environmental Information for Customers in the European Union

European Directive 2002/96/EC requires that the equipment bearing this symbol  on the product and/or its packaging must not be disposed of with unsorted municipal waste. The symbol indicates that this product should be disposed of separately from regular household waste streams. It is your responsibility to dispose of this and other electric and electronic equipment via designated collection facilities appointed by the government or local authorities. Correct disposal and recycling will help prevent potential negative consequences to the environment and human health. For more detailed information about the disposal of your old equipment, please contact your local authorities, waste disposal service, or the shop where you purchased the product.


Български (Bulgarian) - Информация относно опазването на околната среда за потребители в Европейския съюз

Европейска директива 2002/96/EC изисква уредите, носещи този символ  върху изделието и/или опаковката му, да не се изхвърлят с несортирани битови отпадъци. Символът обозначава, че изделието трябва да се изхвърля отделно от сметосъбирането на обикновените битови отпадъци. Ваша е отговорността този и другите електрически и електронни уреди да се изхвърлят в предварително определени от държавните или общински органи специализирани пунктове за събиране. Правилното изхвърляне и рециклиране ще спомогнат да се предотвратят евентуални вредни за околната среда и здравето на населението последствия. За по-подробна информация относно изхвърлянето на вашите стари уреди се обърнете към местните власти, службите за сметосъбиране или магазина, от който сте закупили уреда.


Čeština (Czech) - Informace o ochraně životního prostředí pro zákazníky v zemích Evropské unie

Evropská směrnice 2002/96/ES zakazuje, aby zařízení označené tímto symbolem  na produktu anebo na obalu bylo likvidováno s netříděným komunálním odpadem. Tento symbol udává, že daný produkt musí být likvidován odděleně od běžného komunálního odpadu. Odpovídáte za likvidaci tohoto produktu a dalších elektrických a elektronických zařízení prostřednictvím určených sběrných míst stanovených vládou nebo místními úřady. Správná likvidace a recyklace pomáhá předcházet potenciálním negativním dopadům na životní prostředí a lidské zdraví. Podrobnější informace o likvidaci starého vybavení si laskavě vyžádejte od místních úřadů, podniku zabývajícího se likvidací komunálních odpadů nebo obchodu, kde jste produkt zakoupili.


Dansk (Danish) - Miljøinformation for kunder i EU

EU-direktiv 2002/96/EF kræver, at udstyr der bærer dette symbol  på produktet og/eller emballagen ikke må bortskaffes som usorteret kommunalt affald. Symbolet betyder, at dette produkt skal bortskaffes adskilt fra det almindelige husholdningsaffald. Det er dit ansvar at bortskaffe dette og andet elektrisk og elektronisk udstyr via bestemte indsamlingssteder udpeget af staten eller de lokale myndigheder. Korrekt bortskaffelse og genvinding vil hjælpe med til at undgå mulige skader for miljøet og menneskers sundhed. Kontakt venligst de lokale myndigheder, renovationstjenesten eller den butik, hvor du har købt produktet, angående mere detaljeret information om bortskaffelse af dit gamle udstyr.


Deutsch (German) - Umweltinformation für Kunden innerhalb der Europäischen Union

Die Europäische Richtlinie 2002/96/EC verlangt, dass technische Ausrüstung, die direkt am Gerät und/oder an der Verpackung mit diesem Symbol versehen ist , nicht zusammen mit unsortiertem Gemeindeabfall entsorgt werden darf. Das Symbol weist darauf hin, dass das Produkt von regulärem Hausaltmüll getrennt entsorgt werden sollte. Es liegt in Ihrer Verantwortung, dieses Gerät und andere elektrische und elektronische Geräte über die dafür zuständigen und von der Regierung oder örtlichen Behörden dazu bestimmten Sammelstellen zu entsorgen. Ordnungsgemäßes Entsorgen und Recyceln trägt dazu bei, potentielle negative Folgen für Umwelt und die menschliche Gesundheit zu vermeiden. Wenn Sie weitere Informationen zur Entsorgung Ihrer Altgeräte benötigen, wenden Sie sich bitte an die örtlichen Behörden oder städtischen Entsorgungsdienste oder an den Händler, bei dem Sie das Produkt erworben haben.

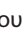
Eesti (Estonian) - Keskkonnaalane informatsioon Euroopa Liidus asuvatele klientidele

Euroopa Liidu direktiivi 2002/96/EÜ nõuete kohaselt on seadmeid, millel on tootel või pakendil käesolev sümbol , keelatud kõrvaldada koos sorteerimata olmejäätmetega. See sümbol näitab, et toode tuleks kõrvaldada eraldi tavalistest olmejäätmevoogudest. Olete kohustatud kõrvaldama käesoleva ja ka muud elektri- ja elektroonikaseadmed riigi või kohalike ametiasutuste poolt ette nähtud kogumispunktide kaudu. Seadmete korrektne kõrvaldamine ja ringlussevõtt aitab vältida võimalikke negatiivseid tagajärgi keskkonnale ning inimeste tervisele. Vanade seadmete kõrvaldamise kohta täpsema informatsiooni saamiseks võtke palun ühendust kohalike ametiasutustega, jäätmekäitlusfirmaga või kauplusega, kust te toote ostsite.


Español (Spanish) - Información medioambiental para clientes de la Unión Europea

La Directiva 2002/96/CE de la UE exige que los equipos que lleven este símbolo , en el propio aparato y/o en su embalaje no deben eliminarse junto con otros residuos urbanos no seleccionados. El símbolo indica que el producto en cuestión debe separarse de los residuos domésticos convencionales con vistas a su eliminación. Es responsabilidad suya desechar este y cualesquiera otros aparatos eléctricos y electrónicos a través de los puntos de recogida que ponen a su disposición el gobierno y las autoridades locales. Al desechar y reciclar correctamente estos aparatos estará contribuyendo a evitar posibles consecuencias negativas para el medio ambiente y la salud de las personas. Si desea obtener información más detallada sobre la eliminación segura de su aparato usado, consulte a las autoridades locales, al servicio de recogida y eliminación de residuos de su zona o pregunte en la tienda donde adquirió el producto.


Ελληνικά (Greek) - Στοιχεία περιβαλλοντικής προστασίας για πελάτες εντός της Ευρωπαϊκής Ένωσης

Σύμφωνα με την Κοινοτική Οδηγία 2002/96/ΕΚ, ο εξοπλισμός που φέρει αυτό το σύμβολο , στο προϊόν ή/και τη συσκευασία του δεν πρέπει να απορρίπτεται μαζί με τα μη διαχωρισμένα αστικά απορρίμματα. Το σύμβολο υποδεικνύει ότι αυτό το προϊόν θα πρέπει να απορρίπτεται ξεχωριστά από τα συνήθη οικιακά απορρίμματα. Είστε υπεύθυνος για την απόρριψη του παρόντος και άλλου ηλεκτρικού και ηλεκτρονικού εξοπλισμού μέσω των καθορισμένων εγκαταστάσεων συγκέντρωσης απορριμμάτων, οι οποίες ορίζονται από το κράτος ή τις αρμόδιες τοπικές αρχές. Η σωστή απόρριψη και ανακύκλωση συμβάλλει στην πρόληψη ενδεχόμενων αρνητικών επιπτώσεων στο περιβάλλον και την υγεία. Για περισσότερες πληροφορίες σχετικά με την απόρριψη του παλαιού σας εξοπλισμού, επικοινωνήστε με τις τοπικές αρχές, τις υπηρεσίες αποκομιδής απορριμμάτων ή το κατάστημα από το οποίο αγοράσατε το προϊόν.


Français (French) - Informations environnementales pour les clients de l'Union européenne

La directive européenne 2002/96/CE exige que l'équipement sur lequel est apposé ce symbole , sur le produit et/ou son emballage ne soit pas jeté avec les autres ordures ménagères. Ce symbole indique que le produit doit être éliminé dans un circuit distinct de celui pour les déchets des ménages. Il est de votre responsabilité de jeter ce matériel ainsi que tout autre matériel électrique ou électronique par les moyens de collecte indiqués par le gouvernement et les pouvoirs publics des collectivités territoriales. L'élimination et le recyclage en bonne et due forme ont pour but de lutter contre l'impact néfaste potentiel de ce type de produits sur l'environnement et la santé publique. Pour plus d'informations sur le mode d'élimination de votre ancien équipement, veuillez prendre contact avec les pouvoirs publics locaux, le service de traitement des déchets, ou l'endroit où vous avez acheté le produit.


Italiano (Italian) - Informazioni relative all'ambiente per i clienti residenti nell'Unione Europea

La direttiva europea 2002/96/EC richiede che le apparecchiature contrassegnate con questo simbolo , sul prodotto e/o sull'imballaggio non siano smaltite insieme ai rifiuti urbani non differenziati. Il simbolo indica che questo prodotto non deve essere smaltito insieme ai normali rifiuti domestici. È responsabilità del proprietario smaltire sia questi prodotti sia le altre apparecchiature elettriche ed elettroniche mediante le specifiche strutture di raccolta indicate dal governo o dagli enti pubblici locali. Il corretto smaltimento ed il riciclaggio aiuteranno a prevenire conseguenze potenzialmente negative per l'ambiente e per la salute dell'essere umano. Per ricevere informazioni più dettagliate circa lo smaltimento delle vecchie apparecchiature in Vostro possesso, Vi invitiamo a contattare gli enti pubblici di competenza, il servizio di smaltimento rifiuti o il negozio nel quale avete acquistato il prodotto.


Latviešu valoda (Latvian) - Ekoloģiska informācija klientiem Eiropas Savienības jurisdikcijā

Direktīvā 2002/96/EK ir prasība, ka aprīkojumu, kam pievienota zīme , uz paša izstrādājuma vai uz tā iesaiņojuma, nedrīkst izmest nešķīrotā veidā kopā ar komunālajiem atkritumiem (tiem, ko rada vietēji iedzīvotāji un uzņēmumi). Šī zīme nozīmē to, ka šī ierīce ir jāizmet atkritumos tā, lai tā nenonāktu kopā ar parastiem mājsaimniecības atkritumiem. Jūsu pienākums ir šo un citas elektriskas un elektroniskas ierīces izmest atkritumos, izmantojot īpašus atkritumu savākšanas veidus un līdzekļus, ko nodrošina valsts un pašvaldību iestādes. Ja izmešana atkritumos un pārstrāde tiek veikta pareizi, tad mazinās iespējamais kaitējums dabai un cilvēku veselībai. Sīkākas ziņas par novecojuša aprīkojuma izmešanu atkritumos jūs varat saņemt vietējā pašvaldībā, atkritumu savākšanas dienestā, kā arī veikalā, kur iegādājāties šo izstrādājumu.

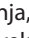
Lietuvškai (Lithuanian) - Aplinkosaugos informacija, skirta Europos Sąjungos vartotojams

Europos direktyva 2002/96/EC numato, kad įrangos, kuri ir , kurios pakuotė yra pažymėta šiuo simboliu (įveskite simbolį), negalima šalinti kartu su nerūšiuotomis komunalinėmis atliekomis. Šis simbolis rodo, kad gaminį reikia šalinti atskirai nuo bendro buitinių atliekų srauto. Jūs privalote užtikrinti, kad ši ir kita elektros ar elektroninė įranga būtų šalinama per tam tikras nacionalinės ar vietinės valdžios nustatytas atliekų rinkimo sistemas. Tinkamai šalinant ir perdirbant atliekas, bus išvengta galimos žalos aplinkai ir žmonių sveikatai. Daugiau informacijos apie jūsų senos įrangos šalinimą gali pateikti vietinės valdžios institucijos, atliekų šalinimo tarnybos arba parduotuvės, kuriose įsigijote tą gaminį.


Malti (Maltese) - Informazzjoni Ambjentali għal Kliġenti fl-Unjoni Ewropea

Id-Direttiva Ewropea 2002/96/KE titlob li t-tagħmir li jkun fih is-simbolu  fuq il-prodott u/jew fuq l-ippakkjar ma jistax jintrema ma' skart municipali li ma ġiex isseparat. Is-simbolu jindika li dan il-prodott għandu jintrema separatament minn ma' l-iskart domestiku regolari. Hija responsabbiltà tiegħek li tarmi dan it-tagħmir u kull tagħmir ieħor ta' l-elettriku u elettroniku permezz ta' facilitajiet ta' ġbir appuntati apposta mill-gvern jew mill-awtoritajiet lokali. Ir-rimi b'mod korrett u r-riċiklaġġ jgħin jipprevjeni konsegwenzi negattivi potenzjali għall-ambjent u għas-saħħa tal-bniedem. Għal aktar informazzjoni dettaljata dwar ir-rimi tat-tagħmir antik tiegħek, jekk jogħġbok ikkuntattja lill-awtoritajiet lokali tiegħek, is-servizzi għar-rimi ta' l-iskart, jew il-ħanut minn fejn xtrajt il-prodott.


Magyar (Hungarian) - Környezetvédelmi információ az európai uniós vásárlók számára

A 2002/96/EC számú európai uniós irányelv megkívánja, hogy azokat a termékeket, amelyeken, és/vagy amelyek csomagolásán az alábbi címke  megjelenik, tilos a többi szelektálatlan lakossági hulladékkal együtt kidobni. A címke azt jelöli, hogy az adott termék kidobásakor a szokványos háztartási hulladékéhszállítási rendszerektől elkülönített eljárást kell alkalmazni. Az Ön felelőssége, hogy ezt, és más elektromos és elektronikus berendezéseit a kormányzati vagy a helyi hatóságok által kijelölt gyűjtőrendszerben keresztül számolja fel. A megfelelő hulladékfeldolgozás segít a környezetre és az emberi egészségre potenciálisan ártalmas negatív hatások megelőzésében. Ha elavult berendezéseinek felszámolásához további részletes információra van szüksége, kérjük, lépjen kapcsolatba a helyi hatóságokkal, a hulladékfeldolgozási szolgálattal, vagy azzal üzlettel, ahol a terméket vásárolta.


Nederlands (Dutch) - Milieu-informatie voor klanten in de Europese Unie

De Europese Richtlijn 2002/96/EC schrijft voor dat apparatuur die is voorzien van dit symbool  op het product of de verpakking, niet mag worden ingezameld met niet-gescheiden huishoudelijk afval. Dit symbool geeft aan dat het product apart moet worden ingezameld. U bent zelf verantwoordelijk voor de vernietiging van deze en andere elektrische en elektronische apparatuur via de daarvoor door de landelijke of plaatselijke overheid aangewezen inzamelingskanalen. De juiste vernietiging en recycling van deze apparatuur voorkomt mogelijke negatieve gevolgen voor het milieu en de gezondheid. Voor meer informatie over het vernietigen van uw oude apparatuur neemt u contact op met de plaatselijke autoriteiten of afvalverwerkingsdienst, of met de winkel waar u het product hebt aangeschaft.


Norsk (Norwegian) - Miljøinformasjon for kunder i EU

EU-direktiv 2002/96/EF krever at utstyr med følgende symbol  avbildet på produktet og/eller pakningen, ikke må kastes sammen med usortert avfall. Symbolet indikerer at dette produktet skal håndteres atskilt fra ordinær avfallsinnsamling for husholdningsavfall. Det er ditt ansvar å kvitte deg med dette produktet og annet elektrisk og elektronisk avfall via egne innsamlingsordninger slik myndighetene eller kommunene bestemmer. Korrekt avfallshåndtering og gjenvinning vil være med på å forhindre mulige negative konsekvenser for miljø og helse. For nærmere informasjon om håndtering av det kasserte utstyret ditt, kan du ta kontakt med kommunen, en innsamlingsstasjon for avfall eller butikken der du kjøpte produktet.


Polski (Polish) - Informacja dla klientów w Unii Europejskiej o przepisach dotyczących ochrony środowiska

Dyrektywa Europejska 2002/96/EC wymaga, aby sprzęt oznaczony symbolem  znajdującym się na produkcie i/ lub jego opakowaniu nie był wyrzucony razem z innymi niesortowanymi odpadami komunalnymi. Symbol ten wskazuje, że produkt nie powinien być usuwany razem ze zwykłymi odpadami z gospodarstw domowych. Na Państwu spoczywa obowiązek wyrzucania tego i innych urządzeń elektrycznych oraz elektronicznych w punktach odbioru wyznaczonych przez władze krajowe lub lokalne. Pozbywanie się sprzętu we właściwy sposób i jego recykling pomogą zapobiec potencjalnie negatywnym konsekwencjom dla środowiska i zdrowia ludzkiego. W celu uzyskania szczegółowych informacji o usuwaniu starego sprzętu, prosimy zwrócić się do lokalnych władz, służb oczyszczania miasta lub sklepu, w którym produkt został nabyty.


Português (Portuguese) - Informação ambiental para clientes da União Europeia

A Directiva Europeia 2002/96/CE exige que o equipamento que exibe este símbolo  no produto e/ou na sua embalagem não seja eliminado junto com os resíduos municipais não separados. O símbolo indica que este produto deve ser eliminado separadamente dos resíduos domésticos regulares. É da sua responsabilidade eliminar este e qualquer outro equipamento eléctrico e electrónico através das instalações de recolha designadas pelas autoridades governamentais ou locais. A eliminação e reciclagem correctas ajudarão a prevenir as consequências negativas para o ambiente e para a saúde humana. Para obter informações mais detalhadas sobre a forma de eliminar o seu equipamento antigo, contacte as autoridades locais, os serviços de eliminação de resíduos ou o estabelecimento comercial onde adquiriu o produto.


Română (Romanian) - Informații de mediu pentru clienții din Uniunea Europeană

Directiva europeană 2002/96/CE impune ca echipamentele care prezintă acest simbol  pe produs și/sau pe ambalajul acestuia să nu fie casate împreună cu gunoiul menajer municipal. Simbolul indică faptul că acest produs trebuie să fie casat separat de gunoiul menajer obișnuit. Este responsabilitatea dvs. să casați acest produs și alte echipamente electrice și electronice prin intermediul unităților de colectare special desemnate de guvern sau de autoritățile locale. Casarea și reciclarea corecte vor ajuta la prevenirea potențialelor consecințe negative asupra sănătății mediului și a oamenilor. Pentru mai multe informații detaliate cu privire la casarea acestui echipament vechi, contactați autoritățile locale, serviciul de salubritate sau magazinul de la care ați achiziționat produsul.

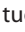
Slovenčina (Slovak) - Informácie o ochrane životného prostredia pre zákazníkov v Európskej únii

Podľa európskej smernice 2002/96/ES zariadenie s týmto symbolom  na produkte a/alebo jeho balení nesmie byť likvidované spolu s netriedeným komunálnym odpadom. Symbol znamená, že produkt by sa mal likvidovať oddelene od bežného odpadu z domácností. Je vašou povinnosťou likvidovať toto i ostatné elektrické a elektronické zariadenia prostredníctvom špecializovaných zberných zariadení určených vládou alebo miestnymi orgánmi. Správna likvidácia a recyklácia pomôže zabrániť prípadným negatívnym dopadom na životné prostredie a zdravie ľudí. Ak máte záujem o podrobnejšie informácie o likvidácii starého zariadenia, obráťte sa, prosím, na miestne orgány, organizácie zaoberajúce sa likvidáciou odpadov alebo obchod, v ktorom ste si produkt zakúpili.


Slovenščina (Slovene) - Okoljske informacije za stranke v Evropski uniji

Evropska direktiva 2002/96/ES prepoveduje odlaganje opreme s tem simbolom  – na izdelku in/ali na embalaži z nesortiranimi komunalnimi odpadki. Ta simbol opozarja, da je treba izdelek zavreči ločeno od preostalih gospodinjskih odpadkov. Vaša odgovornost je, da to in preostalo električno in elektronsko opremo oddate na posebna zbirališča, ki jih določijo državne ustanove ali lokalne oblasti. S pravilnim odlaganjem in recikliranjem boste preprečili morebitne škodljive vplive na okolje in zdravje ljudi. Če želite izvedeti več o odlaganju stare opreme, se obrnite na lokalne oblasti, odlagališče odpadkov ali trgovino, kjer ste izdelek kupili.

Suomi (Finnish) - Ympäristöä koskevia tietoja EU-alueen asiakkaille

EU-direktiivi 2002/96/EY edellyttää, että jos laitteistossa on tämä symboli  itse tuotteessa ja/tai sen pakkauksessa, laitteistoa ei saa hävittää lajittelemattoman yhdyskuntajätteen mukana. Symboli merkitsee sitä, että tämä tuote on hävitettävä erillään tavallisesta kotitalousjätteestä. Sinun vastuullasi on hävittää tämä elektroniikkatuote ja muut vastaavat elektroniikkatuotteet viemällä tuote tai tuotteet viranomaisten määräämään keräyspisteeseen. Laitteiston oikea hävittäminen estää mahdolliset kielteiset vaikutukset ympäristöön ja ihmisten terveyteen. Lisätietoja vanhan laitteiston oikeasta hävitystavasta saa paikallisilta viranomaisilta, jätteenhävityspalvelusta tai siitä myymälästä, josta ostit tuotteen.

Svenska (Swedish) - Miljöinformation för kunder i Europeiska unionen

Det europeiska direktivet 2002/96/EC kräver att utrustning med denna symbol  på produkten och/eller förpackningen inte får kastas med osorterat kommunalt avfall. Symbolen visar att denna produkt bör kastas efter att den avskiljts från vanligt hushållsavfall. Det faller på ditt ansvar att kasta denna och annan elektrisk och elektronisk utrustning på fastställda samlingsplatser utsedda av regeringen eller lokala myndigheter. Korrekt kassering och återvinning skyddar mot eventuella negativa konsekvenser för miljön och personhälsa. För mer detaljerad information om kassering av din gamla utrustning kontaktar du dina lokala myndigheter, avfallshanteringen eller butiken där du köpte produkten.

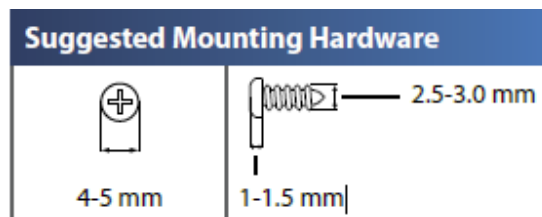


WEB: For additional information, please visit <http://linksys.com>

Wall Mount

E1700 has two wall-mount slots on the bottom panel. This article will guide you on mounting your E1700 on a wall.

For E1700, the distance between the slots is **135 mm**. Two screws (not included) are needed to mount the gateway.



NOTE: Cisco is not responsible for damages incurred by unsecured wall-mounting hardware.

Step 1:

Determine where you want to mount the E1700. Make sure that the wall you use is smooth, flat, dry, and sturdy. In addition, make sure that the location is near an electrical outlet.

Step 2:

Drill two holes into the wall. Ensure that the holes are 135 mm apart.

Step 3:

Insert a screw into each hole, and leave **3 mm** of its head exposed.

Step 4:

Position the E1700 so the wall-mount slots line up with the two screws.

Step 5:

Place the wall-mount slots over the screws and slide the E1700 down until the screws fit snugly into the wall-mount slots.

English — Installation.....	4
Български език — Инсталиране.....	6
Česky — Instalace	8
Dansk — Installation.....	10
Deutsch — Installation	12
Ελληνικά — Εγκατάσταση	14
Español — Instalación.....	16
Suomi — Asennus	18
Français — Installation.....	20
Magyar — Telepítés	22
Italiano — Installazione.....	24
Nederlands — Installatie.....	26
Norsk — Installering	28
Polski — Instalacja	30
Português — Instalação.....	32

Română — Instalare.....	34
Русский — Установка.....	36
Slovenščina — Namestitev	38
Svenska — Installation	40
Türkçe — Kurulum.....	42
Українська — Встановлення.....	44
Support Phone Numbers.....	46

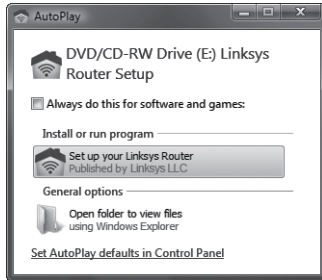
51..... العربية - التثبيت

English — Installation

1. Insert the CD into your CD-ROM drive.



2. Click **Set up your Linksys Router**.



3. To read the License Terms, click **I have read and accept the License Terms for using this software**. To accept the License Terms and continue with the installation, select the check box and click **Next**.



4. Follow the on-screen instructions to complete the installation.

Български език — Инсталиране

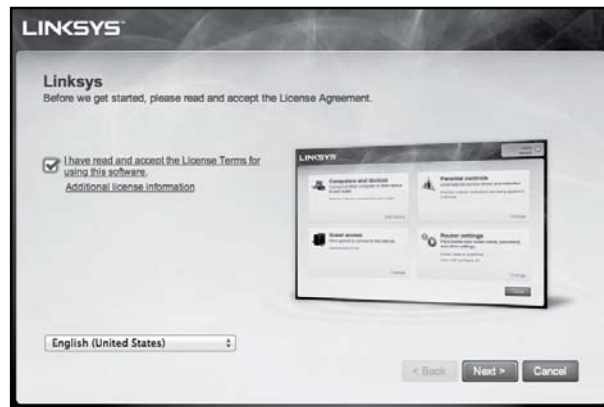
1. Поставете компактдиска в CD устройството.



2. Натиснете “Настройване на рутера Linksys”.



3. За да прочетете Лицензионните условия, поставете отметка срещу “**I have read and accept the License Terms for using this software**” (“Прочетох и приемам Лицензионните условия за използване на този софтуер”). За да приемете Лицензионните условия и продължите инсталирането, изберете квадратчето за отметка и натиснете **Next** (Напред).



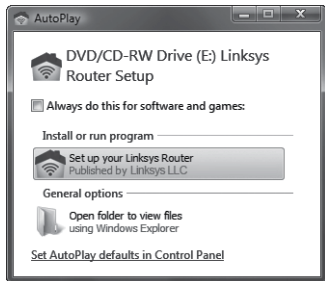
4. Следвайте инструкциите на екрана, за да завършите инсталирането.

Česky — Instalace

1. Vložte disk CD do CD-ROM mechaniky.



2. Klikněte na **Set up your Linksys Router**.



3. Chcete-li si přečíst licenční podmínky, klepněte na možnost **Četl(a) jsem a přijímám licenční podmínky použití tohoto softwaru**. Chcete-li licenční podmínky přijmout a pokračovat v instalaci, označte zaškrťovací políčko a klepněte na tlačítko **Další**.



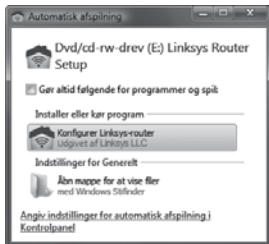
4. Pro dokončení instalace se řiďte pokyny na obrazovce.

Dansk — Installation

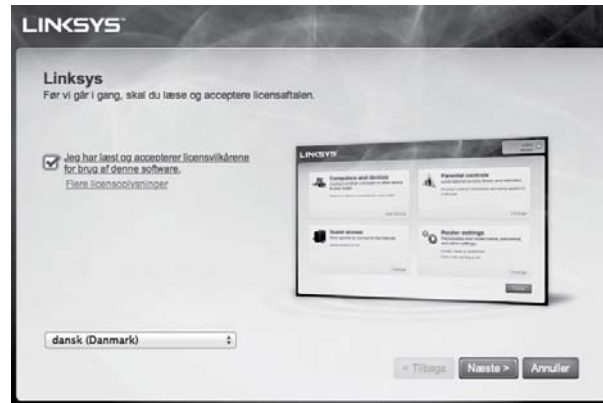
1. Placer cd'en i cd-rom-drevet.



2. Klik på **Konfigurer Linksys-router**.



3. Du kan læse licensvilkårene ved at klikke på **Jeg har læst og accepterer licensvilkårene for brug af denne software**. Du kan acceptere licensvilkårene og fortsætte installationen ved at afkrydse feltet og klikke på **Næste**.



4. Følg vejledningen på skærmen for at fuldføre installationen.

Deutsch — Installation

1. Legen Sie die CD in das CD-ROM-Laufwerk ein.



2. Klicken Sie auf **Richten Sie Ihren Linksys-Router ein**.



3. Um die Lizenzvereinbarung anzuzeigen, klicken Sie auf **Ich habe die Lizenzvereinbarung dieser Software gelesen und akzeptiere sie**. Um die Lizenzvereinbarung zu akzeptieren und mit der Installation fortzufahren, aktivieren Sie das Kontrollkästchen und klicken Sie auf **Weiter**.



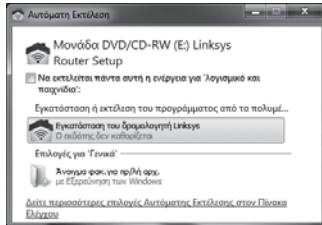
4. Befolgen Sie die Anweisungen auf dem Bildschirm, um die Installation abzuschließen.

Ελληνικά — Εγκατάσταση

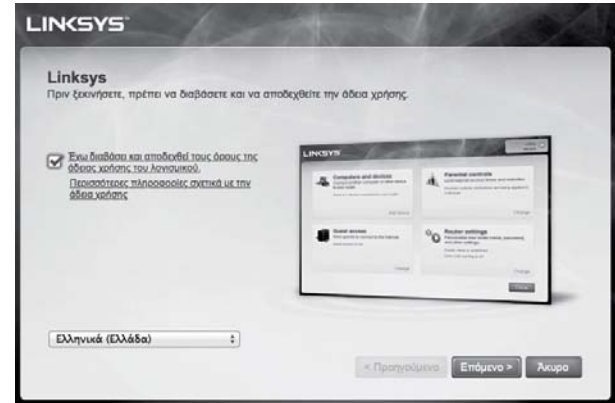
1. Τοποθετήστε το CD στη μονάδα CD-ROM.



2. Επιλέξτε **Εγκατάσταση του δρομολογητή Linksys**.



3. Για να διαβάσετε τους όρους της Άδειας χρήσης, επιλέξτε **Έχω διαβάσει και αποδέχομαι τους όρους της Άδειας χρήσης του λογισμικού**. Για να αποδεχτείτε τους όρους της Άδειας χρήσης και να συνεχίσετε με την εγκατάσταση, επιλέξτε το πλαίσιο ελέγχου και πατήστε το κουμπί **Επόμενο**.



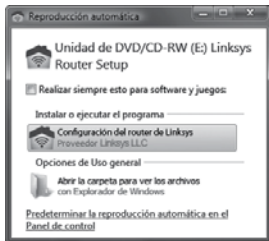
4. Ακολουθήστε τις οδηγίες στην οθόνη για να ολοκληρώσετε την εγκατάσταση.

Español — Instalación

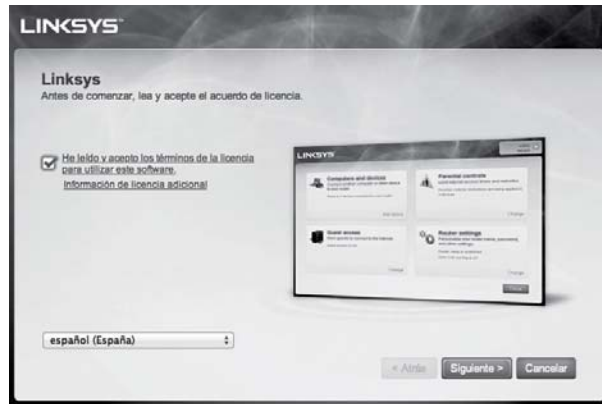
1. Introduzca el CD en la unidad de CD-ROM.



2. Haga clic en **Configuración del router de Linksys**.



3. Para leer los términos de la licencia, haga clic en **He leído y acepto los términos de la licencia para utilizar este software**. Para aceptar los términos de licencia y continuar con la instalación, active la casilla de verificación y haga clic en **Siguiente**.



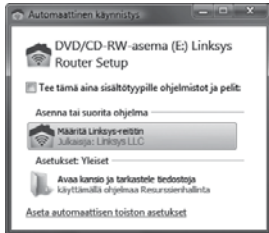
4. Siga las instrucciones que aparecen en pantalla para finalizar la instalación.

Suomi — Asennus

1. Aseta CD-levy tietokoneen CD-ROM-asemaan.



2. Valitse **Määritä Linksys-reititin.**



3. Voit lukea käyttöoikeussopimuksen valitsemalla **Olen lukenut ja hyväksynyt tämän ohjelmiston käyttöoikeussopimuksen.** Hyväksy käyttöoikeussopimus ja jatka asennusta valitsemalla valintaruutu ja valitsemalla sitten **Seuraava.**



4. Viimeistele asennus noudattamalla näyttöön tulevia ohjeita.

Français — Installation

1. Insérez le CD dans le lecteur de votre ordinateur.



2. Cliquez sur **Configurer votre routeur Linksys**.



3. Pour lire les termes de la licence, cliquez sur **J'ai lu et j'accepte les conditions de la licence d'utilisation de ce logiciel**. Pour accepter les termes de la licence et poursuivre l'installation, cochez la case correspondante et cliquez sur **Suivant**.



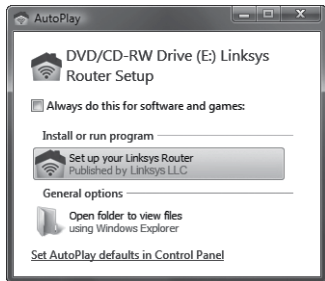
4. Suivez les instructions à l'écran pour terminer l'installation.

Magyar — Telepítés

1. Helyezze a CD-t a CD-ROM lejátszóba.



2. Kattintson a **Set up your Linksys Router** lehetőségre.



3. A licencceltételek elolvasásához kattintson a szoftver használatához elolvastam és elfogadtam a licencceltételeket lehetőségre. A licencceltételek elfogadásához és a telepítés folytatásához jelölje be a jelölőnégyzetet és kattintson a Tovább lehetőségre.



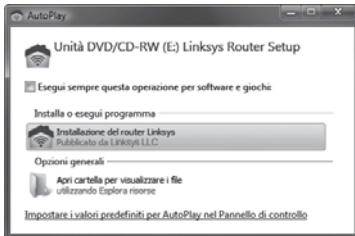
4. A telepítés befejezéséhez kövesse a képernyőn megjelenő útmutatásokat.

Italiano — Installazione

1. Inserire il CD nell'unità CD-ROM.



2. Fare clic su **Installazione del router Linksys**.



3. Per leggere le condizioni di licenza, fare clic su **Ho letto e accettato le condizioni di licenza per l'utilizzo di questo software**. Per accettare le condizioni di licenza e continuare con l'installazione, selezionare la casella e fare clic su **Avanti**.



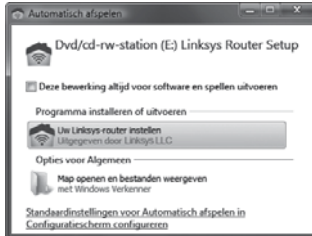
4. Attenersi alle istruzioni su schermo per completare l'installazione.

Nederlands — Installatie

1. Plaats de cd in uw cd-romstation.



2. Klik op **Uw Linksys-router instellen**.



3. Om de licentievoorwaarden te lezen, klikt u op **Ik heb de licentievoorwaarden voor het gebruik van deze software gelezen en accepteer deze**. Om de licentievoorwaarden te accepteren en verder te gaan met installeren, schakelt u het selectievakje in en klikt u op **Volgende**.



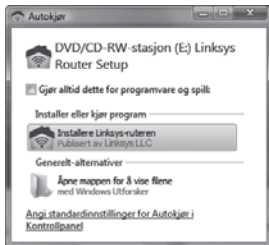
4. Volg de instructies op het scherm om de installatie te voltooien.

Norsk — Installering

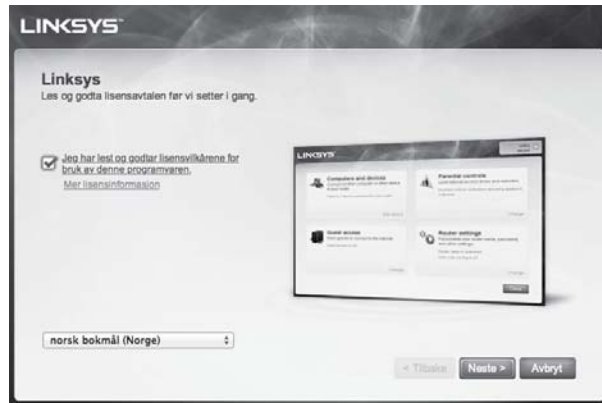
1. Sett inn CDen i CD-ROM-stasjonen på datamaskinen.



2. Klikk på **Installere Linksys-ruteren.**



3. Hvis du vil lese lisensvilkårene, klikker du på **Jeg har lest og godtar lisensvilkårene for bruk av denne programvaren.** Hvis du vil godta lisensvilkårene og fortsette med installeringen, merker du av i boksen og klikker på **Neste.**



4. Følg instruksjonene på skjermen for å fullføre installeringen.

Polski — Instalacja

1. Włóż płytę CD do napędu CD-ROM.



2. Kliknij polecenie **Skonfiguruj router Linksys**.



3. Aby zapoznać się z Warunkami licencji, kliknij **Przeczytałem i zaakceptowałem warunki Umowy licencyjnej dotyczącej korzystania z tego oprogramowania**. Aby zaakceptować Warunki licencji i kontynuować instalację, zaznacz pole wyboru, a następnie kliknij przycisk **Dalej**.



4. Postępuj zgodnie z instrukcjami wyświetlanymi na ekranie, aby zakończyć instalację.

Português — Instalação

1. Coloque o CD na unidade de CD-ROM.



2. Clique em **Configurar o Router Linksys**.



3. Para ler os Termos de Licença, clique em **Li e aceito os Termos de Licença para utilização deste software**. Para aceitar os Termos de Licença e continuar com a instalação, seleccione a caixa de verificação e clique em **Seguinte**.



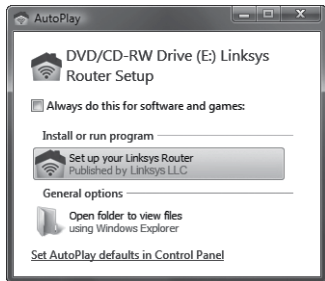
4. Siga as instruções apresentadas no ecrã para concluir a instalação.

Română — Instalare

1. Introduceți CD-ul în unitatea CD-ROM.



2. Faceți clic pe **Set up your Linksys Router**.



3. Pentru a citi Termenii licenței, faceți clic pe **I have read and accept the License Terms for using this software** (Am citit și accept Termenii licenței pentru utilizarea acestui software). Pentru a accepta Termenii licenței și pentru a continua instalarea, bifați caseta de selectare și faceți clic pe **Next** (Următorul).



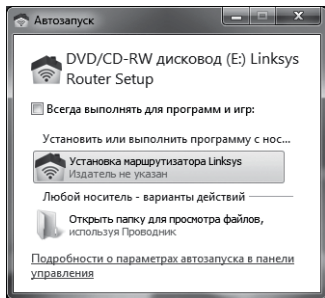
4. Urmăți instrucțiunile care apar pe ecran pentru a termina instalarea.

Русский — Установка

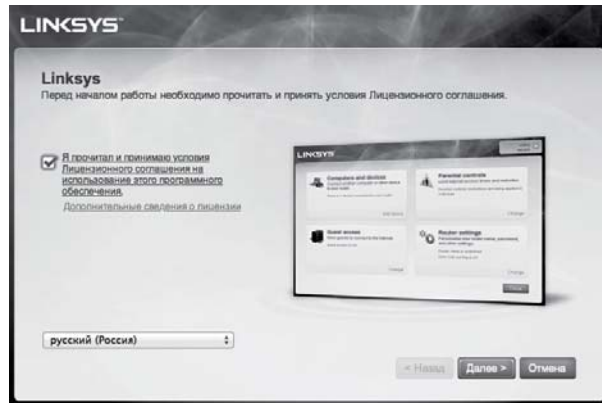
1. Вставьте компакт-диск в привод CD.



2. Выберите **Установка маршрутизатора Linksys**.



3. Чтобы прочитать условия лицензии, нажмите **Я прочитал и принимаю условия лицензии на использование данного программного обеспечения**. Чтобы принять условия лицензии и продолжить установку, установите флажок и нажмите **Далее**.



4. Выполните установку, следуя отображаемым на экране инструкциям.

Slovenščina — Namestitev

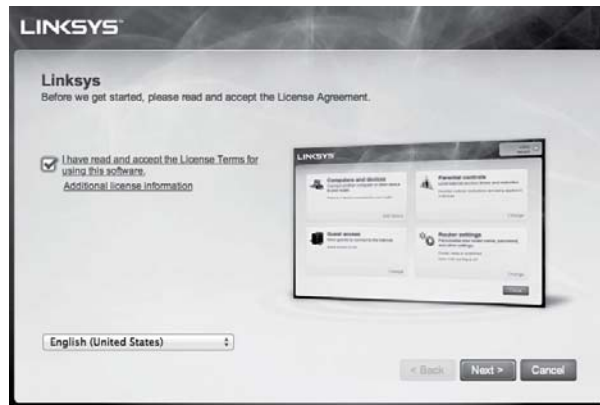
1. Vstavite CD v CD-ROM pogon.



2. Kliknite **Set up your Linksys Router**.



3. Če si želite prebrati licenčne pogoje, kliknite **I have read and accept the License Terms for using this software** (Prebral sem licenčne pogoje za uporabo te programske opreme in se z njimi strinjam). Če želite sprejeti licenčne pogoje in nadaljevati z namestitvijo, potrdite polje in kliknite **Next** (Naprej).



4. Sledite navodilom na zaslonu in dokončajte namestitev.

Svenska — Installation

1. Sätt in cd-skivan i cd-enheten.



2. Klicka på **Installera Linksys-routern**.



3. Vill du läsa licensvillkoren klickar du på **jag har läst och godkänner licensvillkoren för användning av programvaran**.

Du accepterar licensvillkoren och fortsätter installationen genom att markera kryssrutan och klicka på **Nästa**.



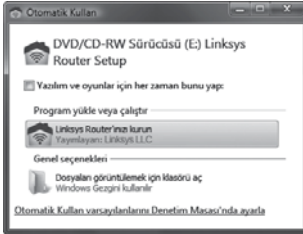
4. Slutför installationen genom att följa instruktionerna på skärmen.

Türkçe — Kurulum

1. CD'yi CDROM sürücüsüne yerleştirin.



2. **Linksys Router'ınızı kurun** düğmesini tıklayın.



3. Lisans Şartlarını okumak için, **Bu yazılımı kullanmak için Lisans Şartlarını okudum ve kabul ettim** düğmesini tıklayın. Lisans Şartlarını kabul etmek ve kurmaya devam etmek için, onay kutusunu seçin ve **İleri** düğmesini tıklayın.



4. Kurmayı tamamlamak için ekrandaki yönergelere uyun.

Українська — Встановлення

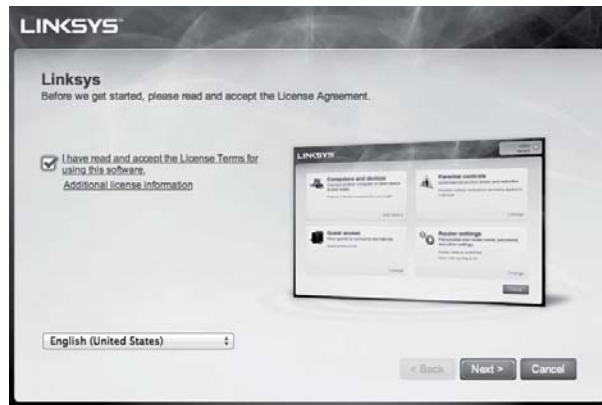
1. Вставте компакт диск до приводу CD-ROM.



2. Виберіть пункт **Set up your Linksys Router** (Установити маршрутизатор Linksys).



3. Щоб ознайомитися з умовами Ліцензійної угоди, клацніть посилання **I have read and accept the License Terms for using this software** (Я ознайомився з умовами Ліцензійної угоди із кінцевим користувачем та погоджуюся з ними). Щоб прийняти умови Ліцензійної угоди та продовжити встановлення, поставте позначку поряд із посиланням і натисніть кнопку **Next** (Далі).



4. Щоб завершити встановлення, дотримуйтеся інструкцій на екрані.

Support Phone Numbers

Austria	0120 609 1158
Belgium	022 008 298
Bulgaria (English/Russian only)	008 001 164 475
Czech Republic	239 014 221
Denmark	43 68 22 10
Finland (English only)	09-72 519 251
France	08 25 54 01 11 Numéro Indigo (0,15 Euros TTC/ minute depuis un poste fixe France Telecom ou coût lié à votre opérateur)
Germany	069 170776717
Greece (English only)	00800 44146694
Hungary	06 17 779 259
India	1800 419 8899
Ireland	01 5245 362
Italy	02 914 833 73

Netherlands	0900 564 6000 0,20€ /minuut van een KPN landlijn. De kostprijs kan verschillen van GSM of andere telefonie providers.
Norway (English only)	241 59849
Poland	022 306 0070
Portugal (English only)	217 616 222
Romania (English only)	0800 833 054
Russia	8-800-200-0902
Slovenia	0800 80 567
Spain	902 027 997 Red fija: establecimiento de llamada 0,09 € + 0,07 €/unidad. Estos precios pueden variar en función del operador o en caso de que usted llame desde un teléfono móvil.
Sweden	08-51 761 668
Switzerland	0445 118 237
Turkey	0 212 4442726

UK	0871 200 0498 (Calls cost up to 0,10€/min from BT Telephony Plan. Mobile and other providers' charges may vary.)
Ukraine	0-800-504-4620
English (EMEA wide number)	+44 2 030 274 625
UAE	04 455 6801
Saoudi Arabia	800 844 5905
South Africa	27 214-273-086

3. لقراءة بنود الترخيص، انقر فوق لقد قرأت بنود الترخيص لاستخدام هذا البرنامج وأقبلها. لقبول بنود الترخيص والاستمرار في التثبيت، حدد خانة الاختيار وانقر فوق التالي.



4. اتبع التعليمات التي تظهر على الشاشة لإكمال عملية التثبيت.

العربية - التثبيت

1. أدخل القرص المضغوط CD في محرك الأقراص المضغوطة CD-ROM.



2. انقر فوق إعداد موجه Linksys الخاص بك.



Visit linksys.com/support for award-winning
24/7 technical support

BELKIN, LINKSYS and many product names and logos are trademarks of the Belkin group of companies. Third-party trademarks mentioned are the property of their respective owners. © 2013 Belkin International, Inc. and/or its affiliates. All rights reserved.

LNKPG-00026A